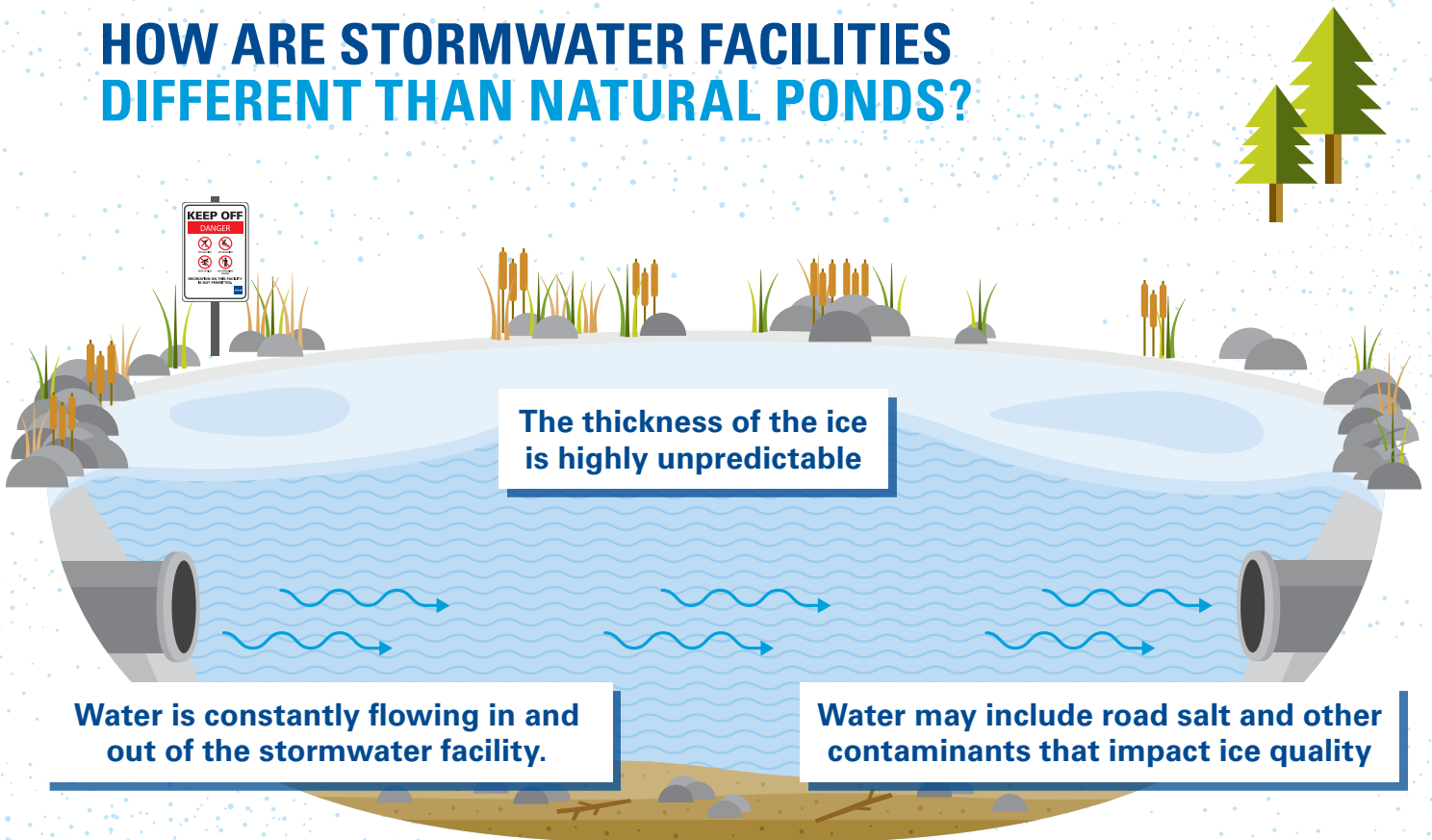


DON'T PUT YOUR LIFE AT RISK. STAY OFF STORMWATER FACILITIES.

While your community pond is a thing of beauty, it's also a stormwater facility and danger lies beneath its surface. It's not safe for any type of recreation, including skating, tobogganing, or walking across.



HOW ARE STORMWATER FACILITIES DIFFERENT THAN NATURAL PONDS?



PROVIDING MORE

EPCOR